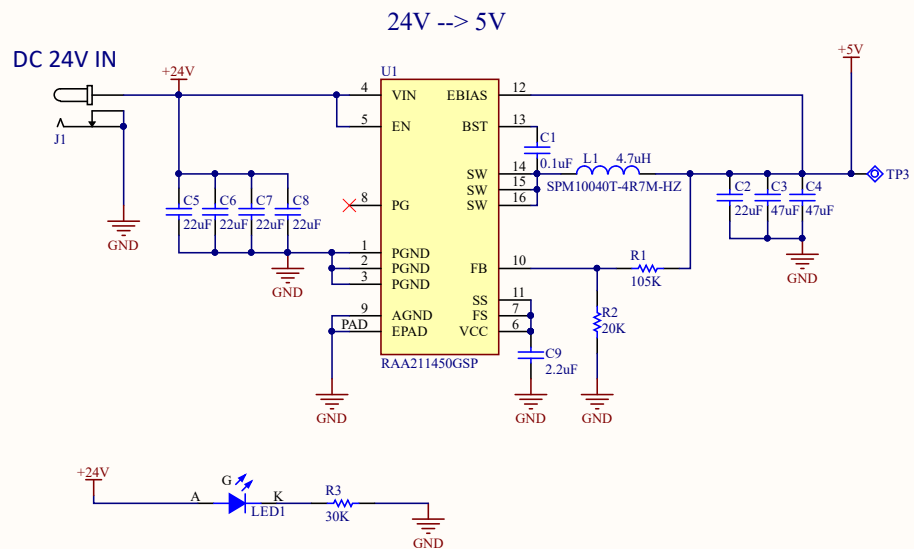


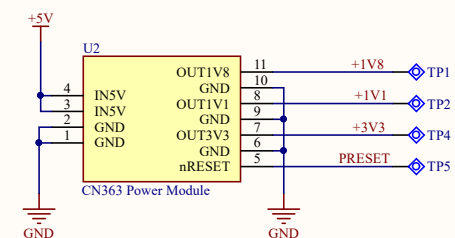
PAGE	DESCRIPTION
1	Index
2	Power Supply
3-5	RZ/N2L
6	QSPI, DRAM
7	EtherPN
8	Ethernet2
9	DI, DO
10	Interface

RECH/SST

QCIOT-045 Industry Gateway Solution



CN363 Power Module



QCIOT-045 Industry Gateway Solution

Power Supply

Version: v1.0

Release Date: 2023/4/18

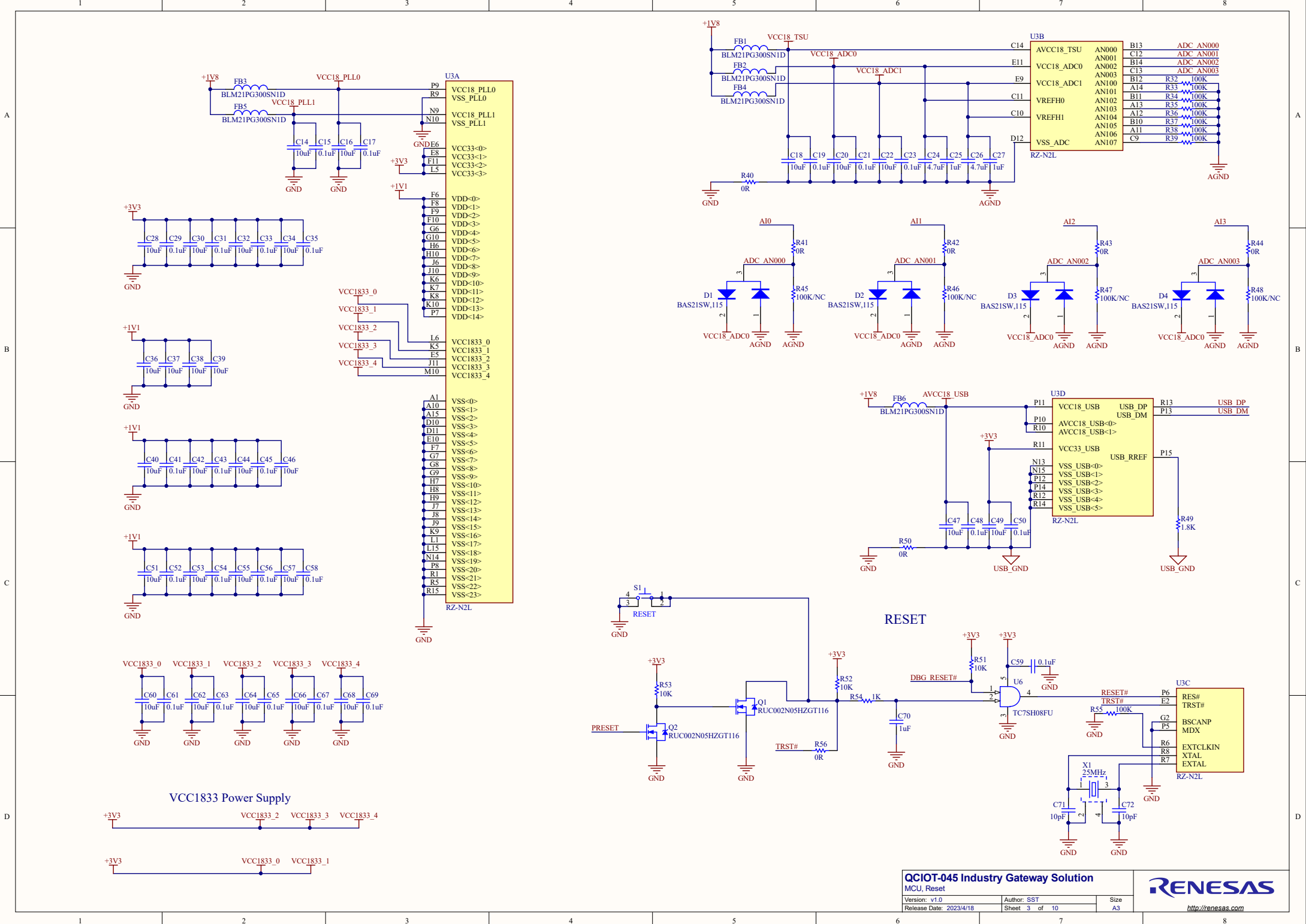
Author: SST

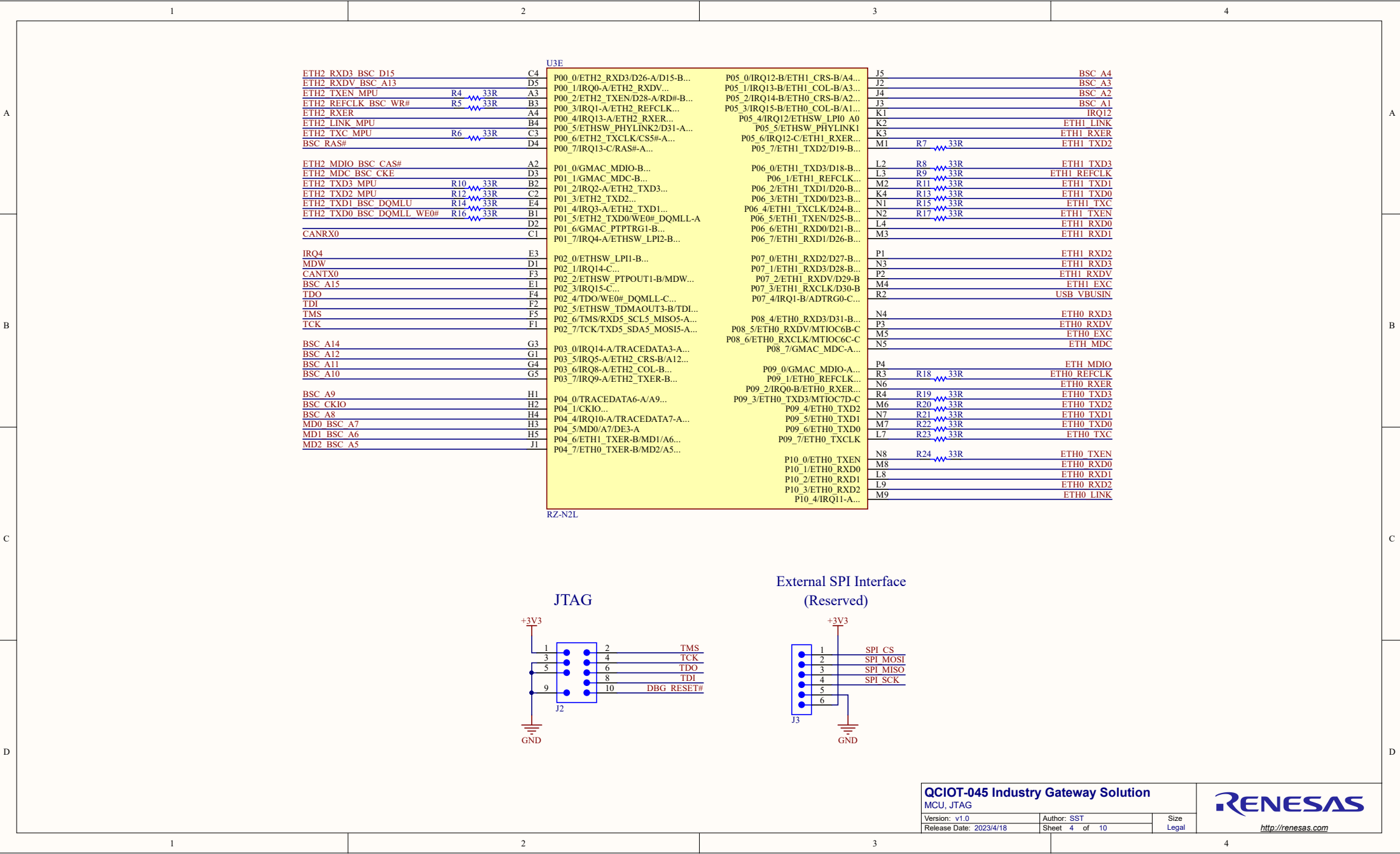
Sheet 2 of 10

Size
Legal

RENESAS

<http://renesas.com>



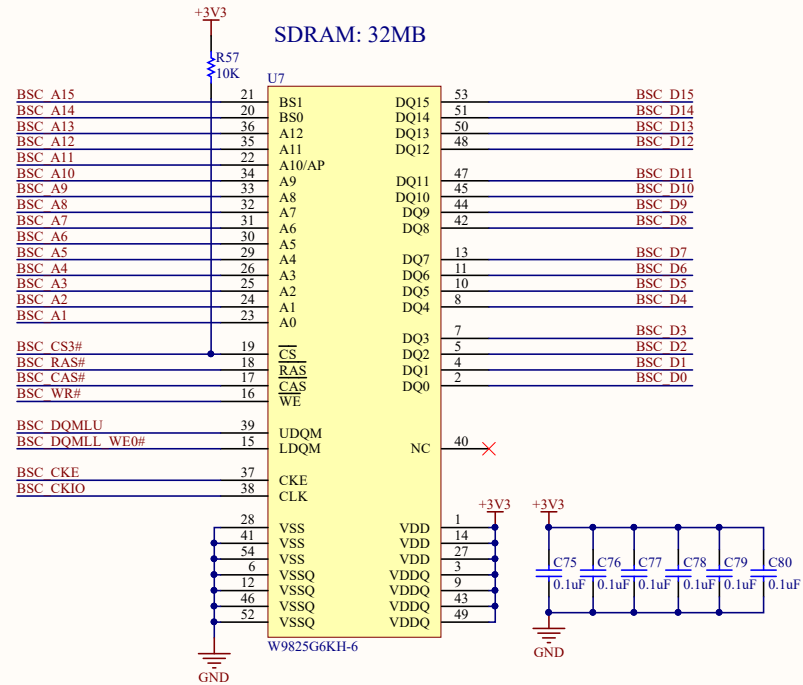
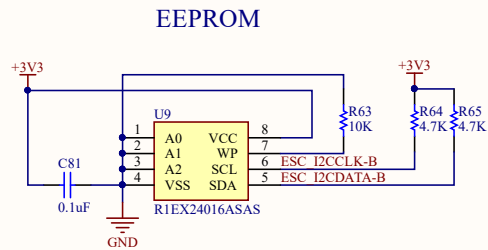
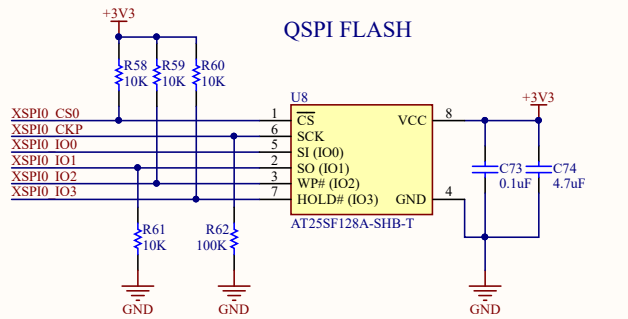


1

2

3

4



QCOT-045 Industry Gateway Solution
QSPI, DRAM, EEPROM

Version: v1.0
Release Date: 2023/4/18

Author: SST
Sheet 6 of 10

Size
Legal

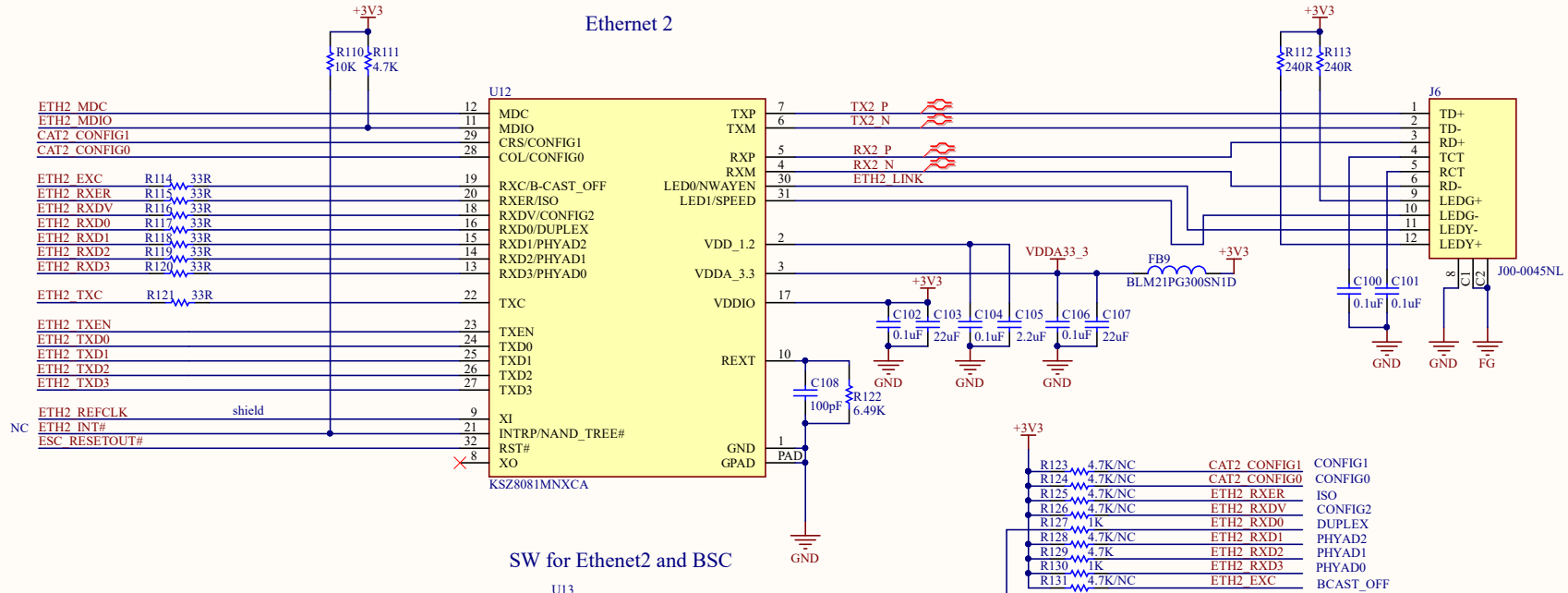
RENESAS
<http://renesas.com>

1

2

3

4



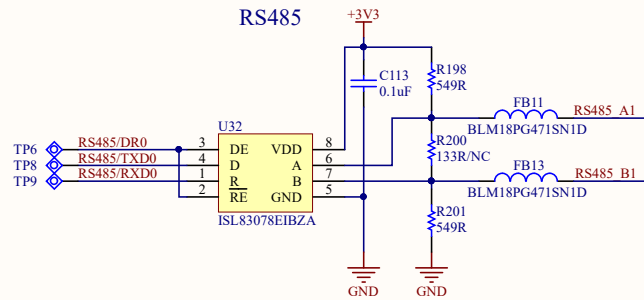
1

2

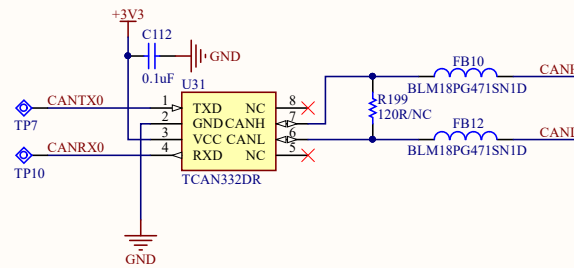
3

4

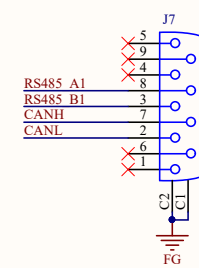
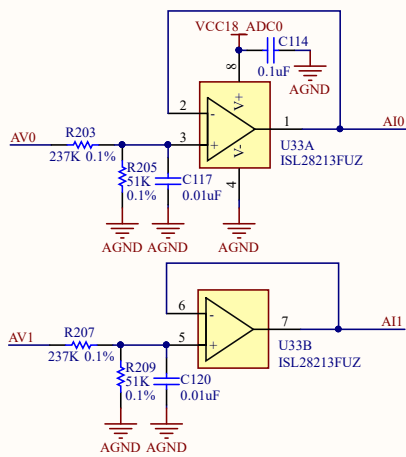
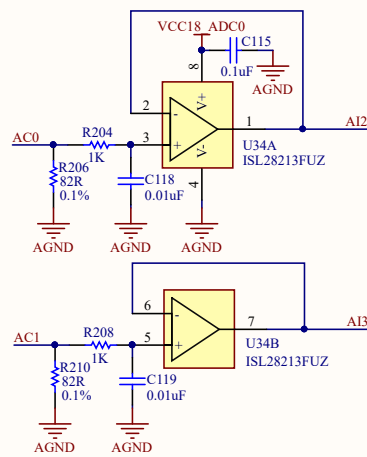
RS485



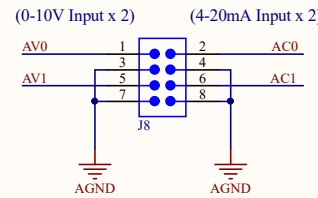
CAN



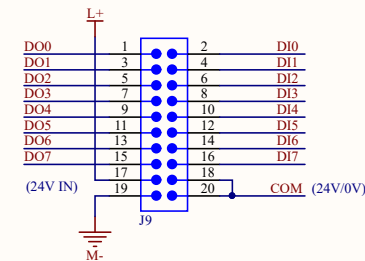
RS485/CAN Interface

Analog Input
(0-10V Input)Analog Input
(4-20mA Input)

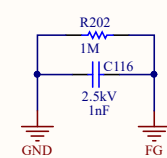
ADI Interface



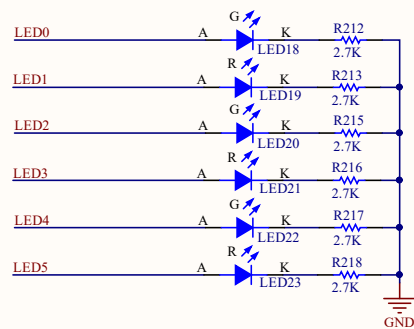
DI/DO Interface



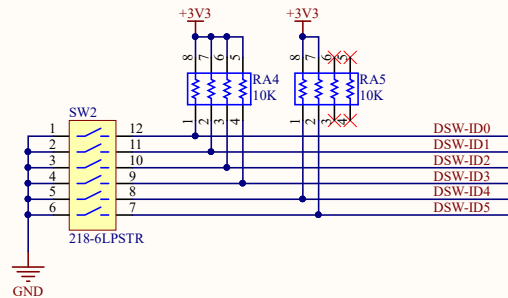
Case Connection (Reserved)



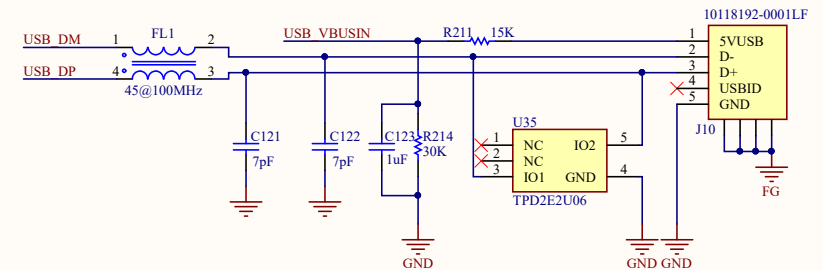
LEDs



ID Setting



USB



QCIOT-045 Industry Gateway Solution

User's Interface

Version: v1.0

Author: SST

Size

Release Date: 2023/4/18

Sheet 10 of 10

Legal

RENESAS

<http://renesas.com>

1

2

3

4